

# Halogen Lighting / Fire Hazards

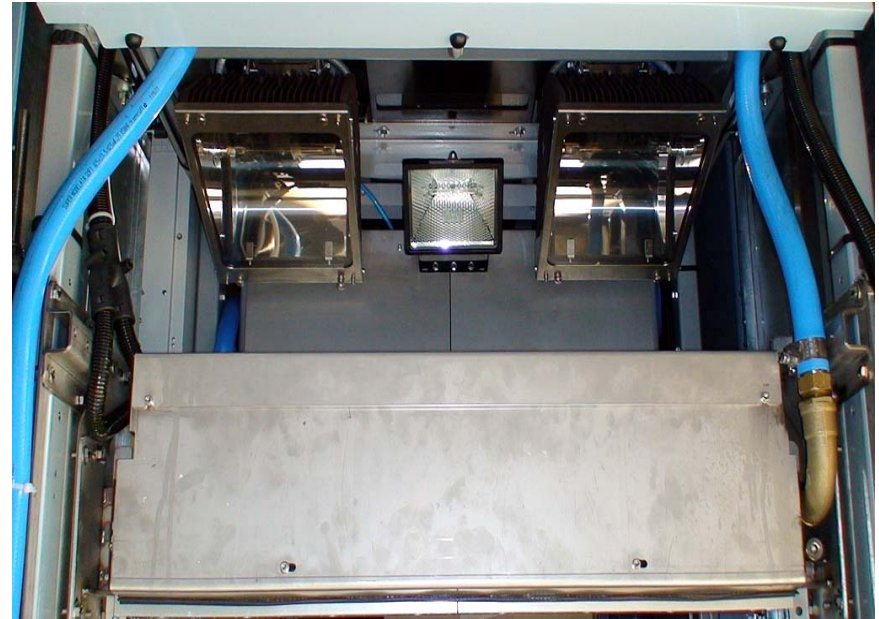
## MSS



**MSS sensors uses only 800 watts per meter of width.**

**MSS employs a lamp cooling mechanism to reduce risk of fires.**

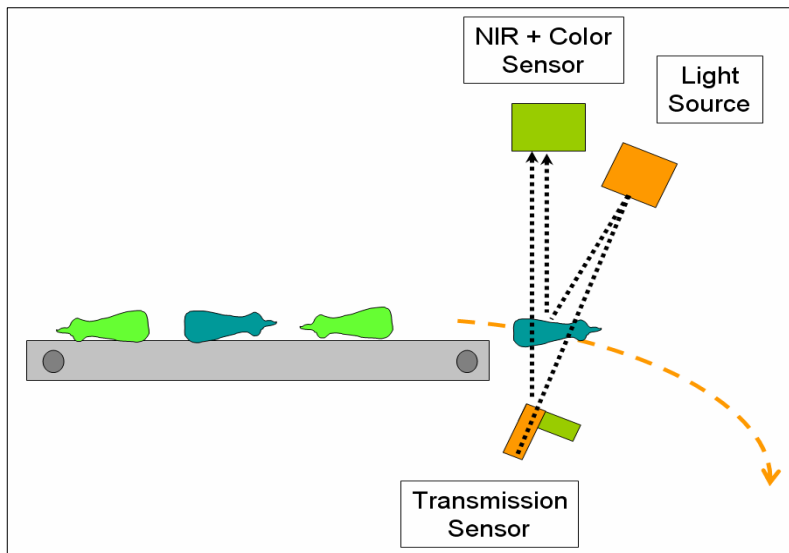
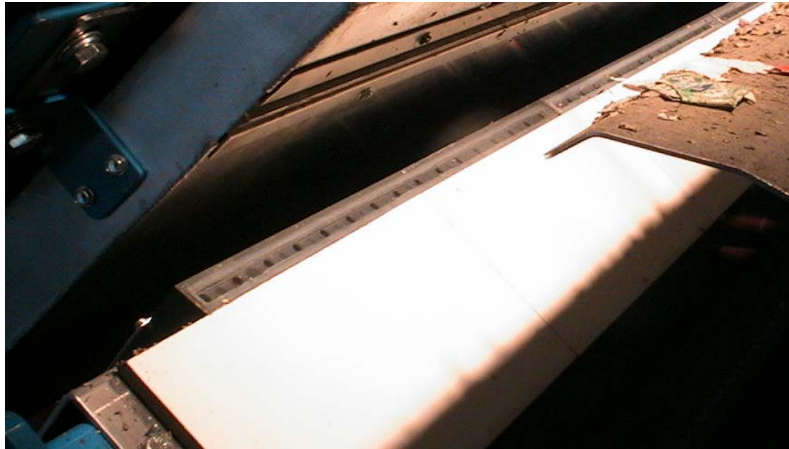
## Others



**Others use more than 2x the amount of power/wattage which causes enormous amounts of heat = FIRE HAZARD. At least 3 incidents have been documented in Europe and the US where plant fires were caused by sorting modules due to the excessive heat.**

# Transmission Sensor Standard Option

## MSS



- Identification of opaque PET
- Identification of translucent bottles (HDPE Natural)

## Others

**Not available**



# Software User Interface + Parameters

## MSS

#	Description	Value	Units	#	Description	Value	Units
1	Eject Delay Down	16	inches	41	Number of Channels	64	none
2	Eject Delay Up	16	inches	42	Split Location	0	none
3	Metal Detector Delay	41	inches	43	Ejection Configuration	0	none
4	Min. No. of Channels	30	none	44	Metal Detector Present	0	0/1
5	Maximum Dark Value	200	none	45	Comm Type	1	0/1
6	Unknown Object Threshold	8	percent	46	Start-Up Delay	0	seconds
7	Spatial Filter Type Down	3	none	47	DSP Temperature Limit	40	Celsius
8	Filter Threshold Down	6	none	48	Coolbox Temperature Fault Enable	0	0/1
9	Footprint Type Down	0	none	49	Filter Set	0	0/1/2
10	Spatial Filter Type Up	3	none	50	Unused	0	Units
11	Filter Threshold Up	8	none	51	Unused	0	Units
12	Footprint Type Up	0	none	52	Transmission Sensor	1	0/1
13	Down Pre-Fire Distance	5	inches	53	Index Offset	225	none
14	Down Post-Fire Distance	5	inches	54	Low Temp.	11	C
15	Up Pre-Fire Distance	0	inches	55	High Temp.	13	C
16	Up Post-Fire Distance	0	inches	56	Channel Mask 0	65535	none
17	Default Fire Direction	1	none	57	Channel Mask 1	65535	none
18	Unused	0	Units	58	Channel Mask 2	65535	none
19	Normalization Timer Length	120	none	59	Channel Mask 3	65535	none
20	Image Dump Trigger Threshold	2	pixels	60	Channel Mask 4	0	none
21	Object Recognition Enable	1	0/1	61	Channel Mask 5	0	none
22	Minimum Object Size	3	pixels	62	Channel Mask 6	0	none
23	Maximum Object Size	200	pixels	63	Channel Mask 7	0	none
24	Maximum Object Length	18	pixels	64	Gain 0	3	none
25	Maximum Object Width	18	pixels	65	Gain 1	4	none
26	Fill Factor Threshold	25	percent	66	Gain 2	4	none
27	Unused	0	Units	67	Gain 3	2	none
28	Unused	0	Units	68	Gain 4	2	none
29	Unused	0	Units	69	Gain 5	2	none
30	Unused	0	Units	70	Gain 6	3	none
31	Unused	0	Units	71	Gain 7	4	none
32	Unused	0	Units	72	Parallel Port Configuration	1	0/1
33	Unused	0	Units	73	Unused	0	Units
34	Unused	0	Units	74	Metal Detector Pitch	0	0/1
35	Unused	0	Units	75	Delay Even/Odd	0	0/1/2
36	Unused	0	Units	76	Security Code	11111	none
37	Unused	0	Units				
38	Unused	0	Units				
39	Unused	0	Units				
40	Solenoid Board Configuration	0	none				

Global Parameter  
Sort-Specific Parameter

Back

## Others

Only limited access to machine setup and trouble-shooting is provided to customers.

Full and unrestricted access to parameters and machine setup is provided to customer at all times. Training is provided as part of the startup and commissioning.